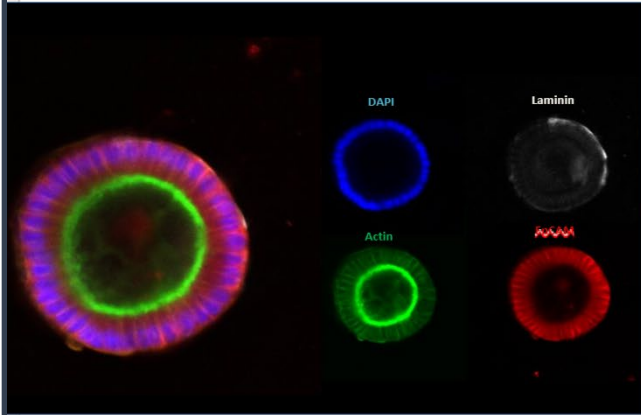
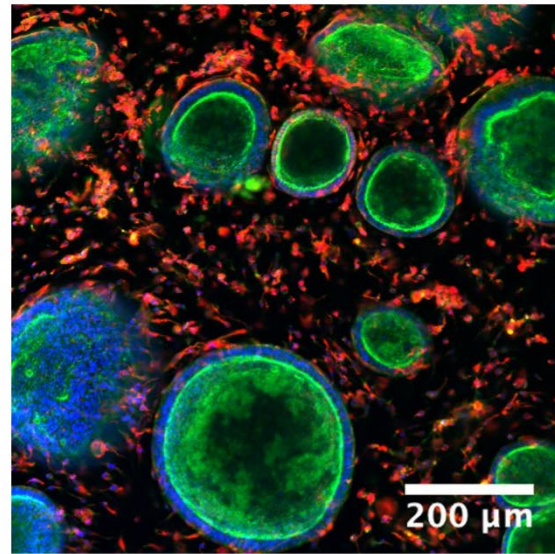


Endometrial Organoids – 2 figures

Caption: Endometrial patient-derived epithelial organoids polarize (apical actin, green; basal laminin, white) and express cell-cell adhesion proteins (EpCAM-red) when encapsulated in fully synthetic hydrogel.



Caption: Co-culture of endometrial patient-derived epithelial organoids (green/blue) with stromal cells (red) in “one size fits all” synthetic matrix.



Vimentin F-actin Nuclei

Figure 10: See captions on image above.